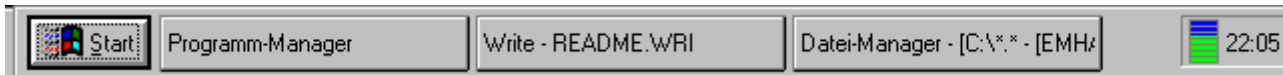


MH-Task

Version 2.00 for Windows 3.xx
© 1996 Markus Hartwig



README and Helpfile

Index:

1. What is MH-Task?
 2. Use MH-Task
 3. Shareware/Registriation
-

1. What is MH-Task

Not ready to run Windows95 on your computer? Now you can - with MH-Task!
MH-Task is an taskbar for Windows 3.xx and is styled like the tasbar of Windows 95!

MH-Task was programmed from the idea that not all peple want or can use Windows 95.
But the taskbar from Windows95 is an good tool to use Windows easier - and this you can have now also under Windows 3.xx.

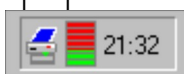
- Features:
- MH-Task works fast and should run on every computer, running Windows 3.xx.
 - yes - it runs with an old 286 computer!
 - you have sub menus for many programs
 - the 'MY PROGRAMS' sub menu for your featured programs - free to configure
 - an very fast and easy File-Find function
 - an command-line program starter with all your started command lines to memory
 - all system- and help programs of windows 3.x are included in some sub menus
 - restart Windows, restart computer and shutdown option at the exit selection
 - system resources icon
 - and many more find out!

2. Use MH-Task

You can use MH-Task with your mouse and keyboard - but you must have a mouse tu use the programm effectly.

The symbols in the right corner of the taskbar means:

print-manager is active
|
system ressources



System resources:

If MH-Task displays the resourches-symbol like this then ca. 80% of your Windows-System-Resources are used.

Then you should restart Windows or close one or more running programs to work faster with your System.

Menu 'Start':

The menu 'Start' you can use to execute many programs and functions
They sub menus are described following:

My Programs: Here you can start your favourite programs or documents that you can fix yourself.
The contents of this menu you can fix yourself with the sub menu-selection:
'MH-Task - Menu 'My Programs'.

Help programs: Here are fixed some help-programs like write, notepad or the file-manager.

System prog.: Under the System-menu selection are fixed some programs like print-manager,
system-control or the windows configuration editor.

File Search: Here you can search for files on your computer. Search options are the filename
and/or the date of the file. The search-string also can contain the some wildcards (*)
(e.g.: 'MH*.*')

Ausführen: Here you can execute programs or documents with their command-line.
If the command line is really existing and the execution is succesful, this command
line will be saved to the list-box and will be ever there to execute the programs faster.
The lines in the list box will be saved in the file 'MH_START.DAT' at the windows
directory. You can delete this file to refresh the contents of the list-box.

MH-Task: Here you'll find the files README.WRI and REGISTER.WRI, the registration program
to make the shareware test version to an registered full version with the code you'll
get from me if your register the program. (More informations: 3. Shareware/Registration)
Last, you can find here the selection 'Menu My Programs'.
Here you can fix the programs that will be at the 'My Programs' sub menu-selection.

3. Shareware/Registration

This software is published and distributed as shareware. This means, you can use this
program free for an maximum test period of 30 days to test the program.
After this period of 30 days you have to register the program!

The registration fee for this program is only US \$ 15,- or - for german DM (Deutsche Mark) 20,-.
(There is also available an german version!!!)

ONLINE REGISTRATION:

You can register MH-Task online:

1) via Compuserve: GO SWREG, program-ID is: XXXXXXXX

2) online at the WWW (CYBANK e-cash)! - Its really easy!!

For more informations see the MH-Task Homepage at:

http://yi.com/home/HartwigMarkus/mh_task.htm

**You will get an registration code/key via e-mail from me to change the shareware-version
to an registered full-version.**

If you are not online, you can register per mail:

**Please use to register with mail only the registration form REGISTER.WRI! You should
print out it and send with mail to my adress.**

**You will get an registration code/key from me to change the shareware-version to an
registered full-version.**

More informations you will find in the files REGISTER.WRI and LICENCE.TXT.

Adress of the author:

Markus Hartwig

Elli-Voigt-Str. 4

D-04159 Leipzig (Germany)

Tel. +49 341-91 28 531,

e-mail: mahartwig@metronet.de

--- END OF FILE ---